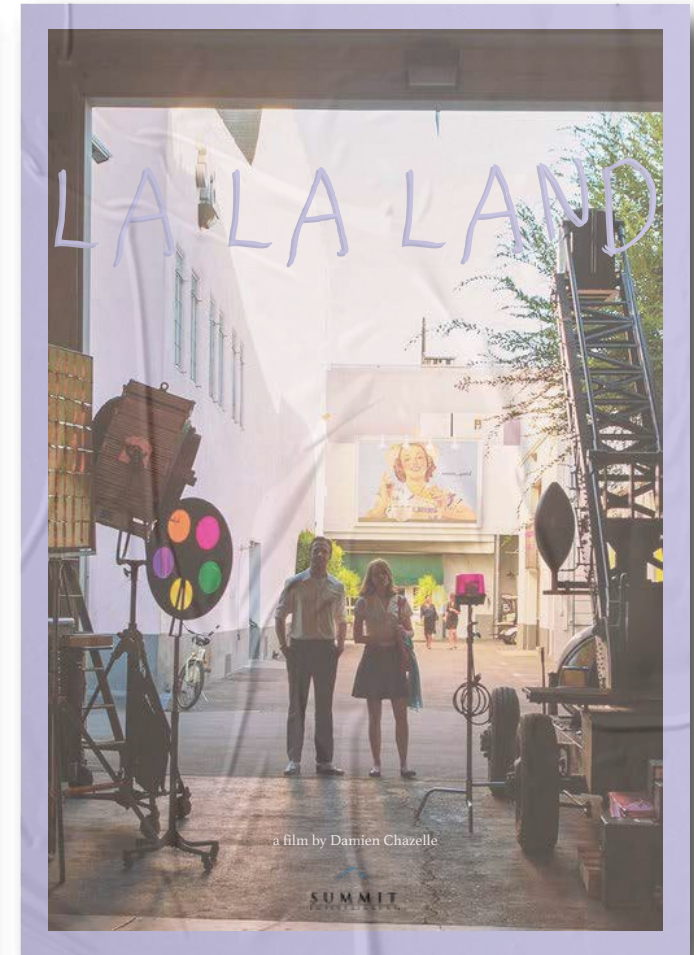
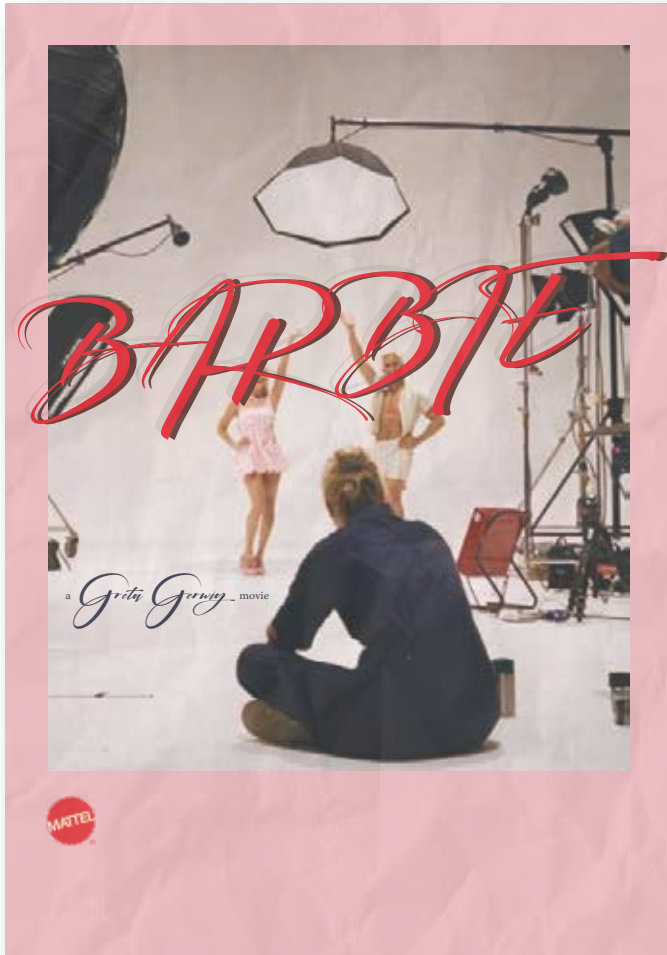




Wilma Harrysson
"I DESIGN STORIES"

MOVIE POSTERS



Layout, texture, composition, colorscheme and choice of images to enhance the stripped down essence

Wilma Harrysson

CONCEPT



Childhood Vacay Core

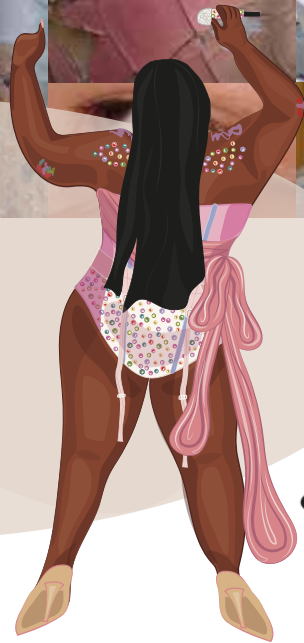


Collage of pictures taken by me (excluding backgrounds, gloss + orange flipflops), Translated into an urban beach sculpture *Wilma Harrysson*

PERFORMANCE- & READY TO WEAR CONCEPT



performance wear



CHRISTIAN COWAN



ready to wear

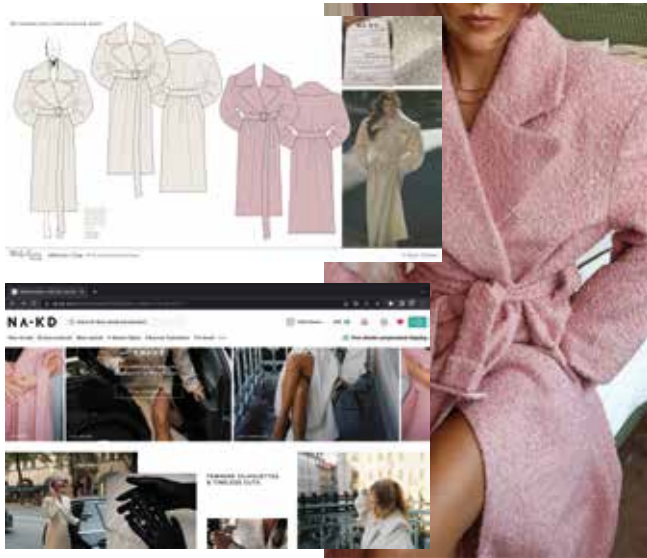


"Caught in an awkward attempt to hold on to the last bit of childhood: Porcelain Puberty serves rosy knees, stickers on bare skin, delicate fabrics and innocent tones styled with random bits and pieces."

Wilma Harrysson

NA-KD INTERNSHIP

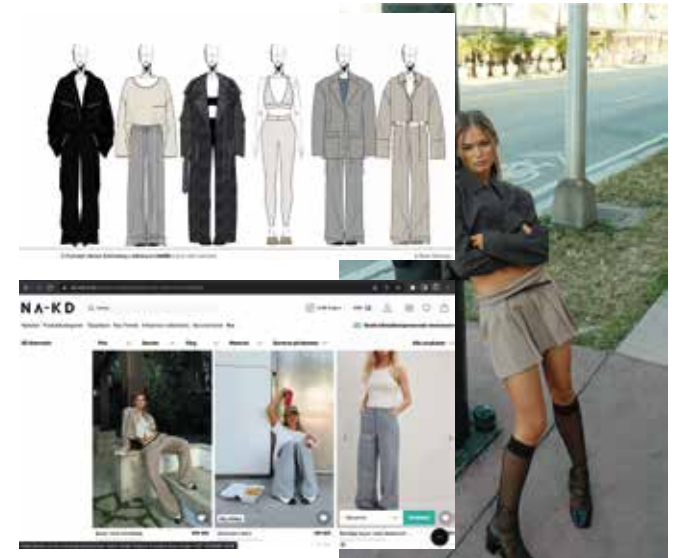
MOLLY RUSTAS



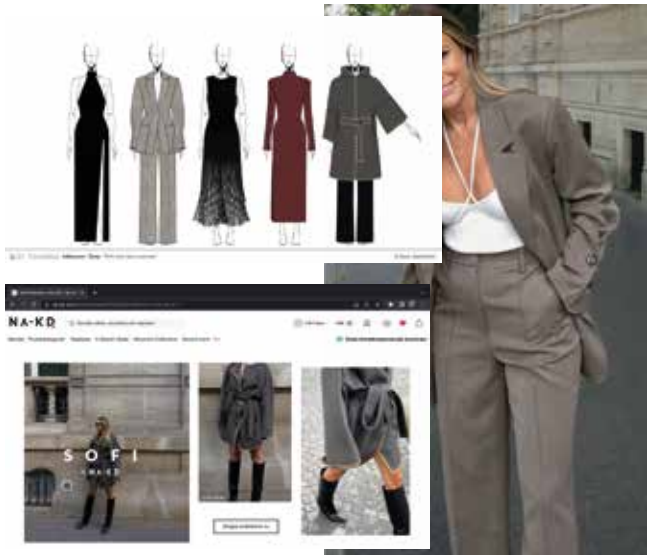
JANKA POLLIANI



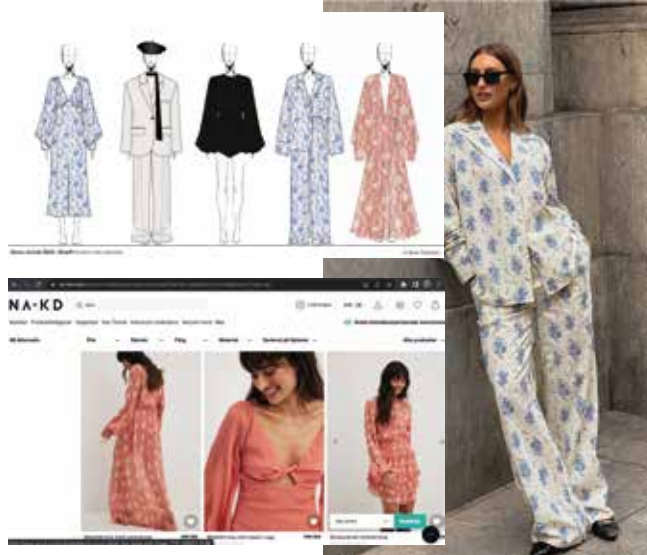
HANNA SCHÖNBERG



SOFI FAHRMAN ELGELBERT



SANNA JÖRNVIK DÈMAN



KLARA MONTES



Sneak peek of parts of the 17 influencer collab collections I had the pleasure to work on during my internship

Wilma Harrysson

NA-KD

Gothenburg / 18/5-2022
Internship Certificate

Wilma Harrysson has during the period Jan until June 2022 completed her internship at NA-KD com's head office in Gothenburg, Sweden. During the internship, Wilma has obtained an insight into the work of our co-lab design Department.

In her practice she has, amongst other work tasks, worked with:

- Sketching our co-lab collections together with designer
- Researching inspiration for moodboard and collection
- Holding the overviews updated
- Creating CADs
- Choosing fabrics together with designer and buyer
- Help choosing colours
- Print research and input
- Creating prints and changing colours on prints
- Participated in fittings
- Participated in co-lab meetings with extern partner
- Preparation for new collections with co-lab partner

I would describe Wilma as a genuine and fast-learning observer who perform any task given to her with curiosity and enthusiasm. Wilma, with her positive mindset, has been such an excellent team player who has had the willingness to adapt in a very fast-changing environment with a smile on her face. She has enriched, not only the design team with her persona, but also the collections with her creative sketches and ideas.

Wilmas best feature is her positive attitude towards any situations/task/challenges/change.

We wish Wilma the best of luck in her future studies and career.


Emma Atterholm – 18/5
Designer Co-lab
Emma.atterholm@na-kd.com / 0707714904

Nora Rahim Ersson
Concept designer
Nora.rahim@na-kd.com / 0720787520

WILMA

Wilma!
Hur ska det gå för mig utan min
lagspelare ni?
Stort tack för dessa 20 veckor
tillsammans. Det har varit så
roligt att få jobba ihop och
att se din utveckling som
designer. Stort lycka till
och jag är så nyfiken på
vart din kreativitet tar
dig här next. Du är en
stjärna!

/Emma

 Nordiska
Textilakademien

Bedömningsunderlag LIA
Internationell designer

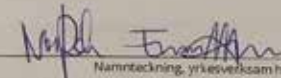
Kan ta ansvar och samarbeta
med andra.

Yrkesverksam handledares kommentarer:


Det har varit ett rent nöje att få arbeta tillsammans med Wilma. Det tog inte lång tid innan det kändes som att hon alltid hade varit där. Hennes inlärningsförmåga har gjort henne till en snabbt växande designer och team-player. Dagligen stämde vi av arbetsstatus för veckan, och med blandad assistans och självständigt arbete utförde Wilma ett galant jobb inom den givna tidsramen. Trots den röriga planeringen tog Wilma alltid förändringar eller nya arbetsuppgifter med ett leende på läpparna. Hennes tekniska färdigheter inom speciellt illustratör är på en hög nivå idag. Ska bli spännande att se vart hennes kreativitet tar henne och när hennes åsikter och tankar kan få skina igenom ännu mer.

Frånvarotimmar: 0

26/5-2022
Datum


Namnteckning, yrkesverksam handledare

25/5-2022
Datum


Namnteckning, student

 Yh
Utbildningsmyndigheten

Utbildning inom
yrkeshögskolan

RECOMMENDATION

LETTER

Wilma Harrysson

SKETCHES & DRAWINGS



HANDPAINTED CHRISTMAS ORNAMENTS



Acrylic paint on plastic baubles, glazed with a lacquer

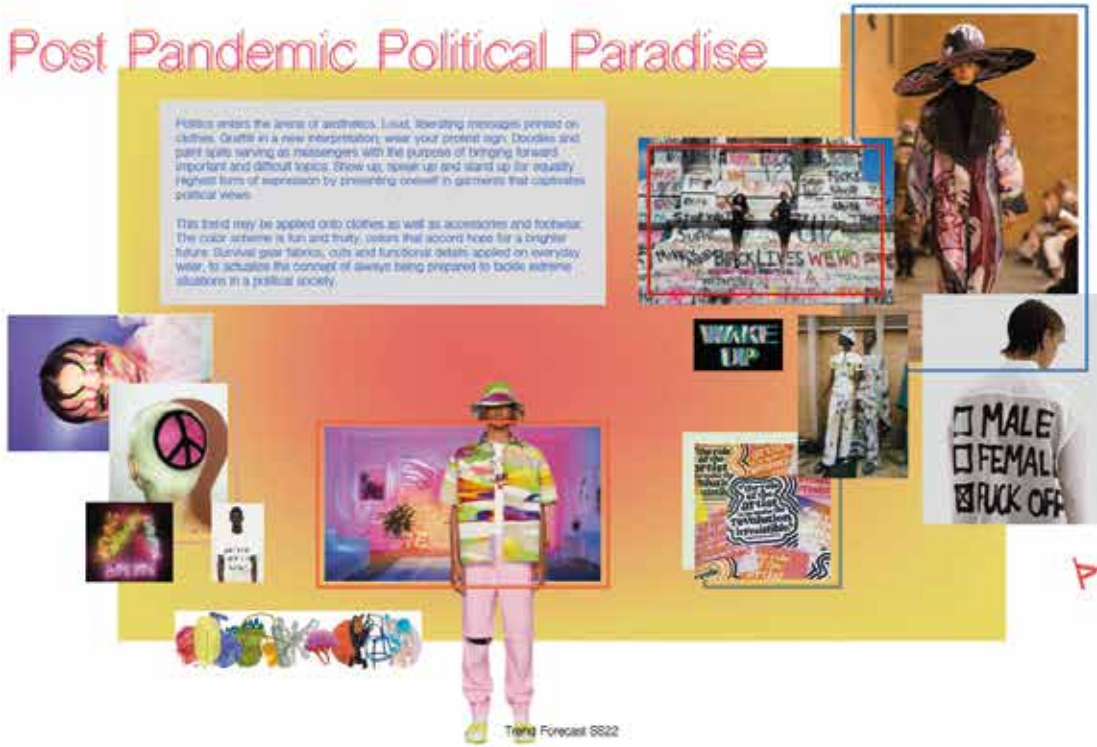
Wilma Harrysson

TREND RESEARCH

Post Pandemic Political Paradise

Politics enters the arena of aesthetics. Loud, liberating messages printed on clothes. Graffiti in a new interpretation; wear your protest sign. Doodles and paint spills serving as messengers with the purpose of bringing forward important and difficult topics. Show up, speak up and stand up for equality. Highest form of expression by presenting oneself in garments that captivates political views.

This trend may be applied onto clothes as well as accessories and footwear. The color scheme is fun and fruity; colors that accord hope for a brighter future. Survival gear fabrics, cuts and functional details applied on everyday wear, to actualize the concept of always being prepared to tackle extreme situations in a political society.



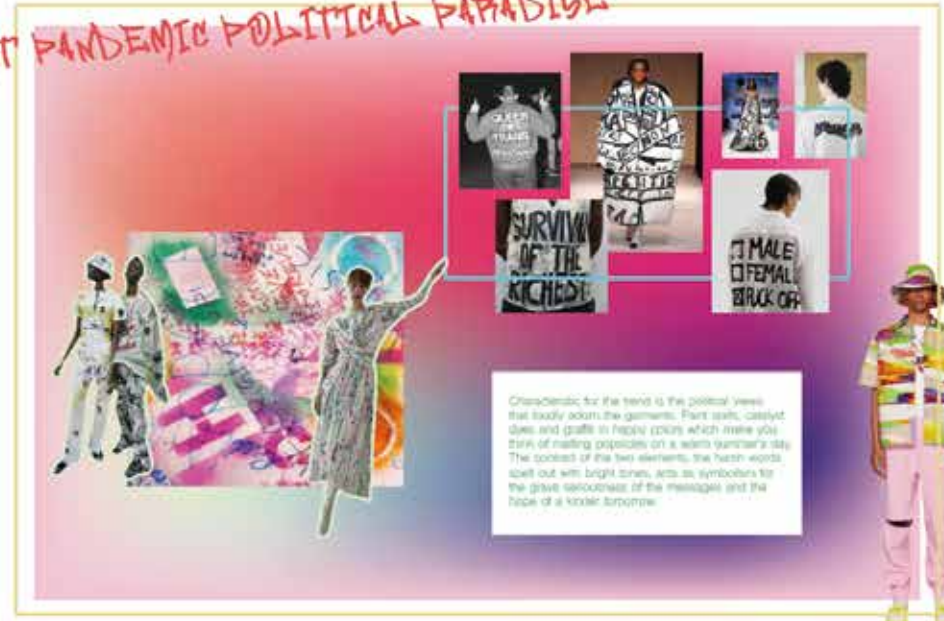
Trend Forecast SS22

Characteristic for the trend is the political views that loudly adorn the garments. Paint spills, catalyst dyes and graffiti in happy colors which make you think of melting popsicles on a warm summer's day. The contrast of the two elements, the harsh words spell out with bright tones, acts as symbolism for the grave seriousness of the messages and the hope of a kinder tomorrow.

Politics enters the arena of aesthetics. Loud, liberating messages printed on clothes. Graffiti in a new interpretation; wear your protest sign. Doodles and paint spills serving as messengers with the purpose of bringing forward important and difficult topics. Show up, speak up and stand up for equality. Highest form of expression by presenting oneself in garments that captivates political views.

This trend may be applied onto clothes as well as accessories and footwear. The color scheme is fun and fruity; colors that accord hope for a brighter future. Survival gear fabrics, cuts and functional details applied on everyday wear, to actualize the concept of always being prepared to tackle extreme situations in a political society.

POST PANDEMIC POLITICAL PARADISE



Characteristic for the trend is the political views that loudly adorn the garments. Paint spills, catalyst dyes and graffiti in happy colors which make you think of melting popsicles on a warm summer's day. The contrast of the two elements, the harsh words spell out with bright tones, acts as symbolism for the grave seriousness of the messages and the hope of a kinder tomorrow.

Trend Print SS22

Trend and world analysis of general vibe + prints, with focus on layout and composition, for ss22. (Made aw20)

Wilma Harrysson

GRADUATION COLLECTION + CONCEPT

Concept

Just a poet



Meet the poets:



Lyrics and poems:

- For as we have our eyes on the future, history has its eyes on us.
- A.G
- I know my love should be celebrated, but you tolerate it.
- T.S
- What is stronger than the human heart. Which shatters over and over, and still lives.
- R.K
- I have emotional motion sickness.
- P.B
- You were not born an ember. You were born the flame.
- A.M

Wilma Harrysson

Poets



creating their art performing their art deep visually pleasing

Wilma Harrysson

Viewers



appreciative does real supportive

Cross season 2022

Today's young poets are our generations Pop Stars, exploring the idea of stage wear for poets. Influenced by Greta Gerwig's Little Women and the quote "I think the poets might disagree", "Well I'm not a poet, I'm just a woman". Believing the poets are women and women are poets.



Nordiska
Textilakademin

Target, gro.

HARRIS REED

Nordiska
Textilakademin

TECH-PACK, ORDER TO SUPPLIERS

90's Function Jacket - Cross Season 2/16
Production sketch outside front Date: 2020-02-14

Quality: Windbreaker
Size range: M
Art. no: 132807641
Supplier: Johnson & Co
Sample request: Photo
Designer: Wilma Harrysson

Colour ways: Black
Red

Description: Windbreaker with detachable sleeves and prominent 90s influences

90's Function Jacket - Cross Season 9/16
Colour ways inside back Date: 2020-02-14

Quality: Windbreaker
Size range: M
Art. no: 132807641
Supplier: Johnson & Co
Sample request: Photo
Designer: Wilma Harrysson

Colour ways: Black
Red

Description: Windbreaker with detachable sleeves and prominent 90s influences

90's Function Jacket - Cross Season 12/16
Labels Date: 2020-02-14

Quality: Windbreaker
Size range: M
Art. no: 132807641
Supplier: Johnson & Co
Sample request: Photo
Designer: Wilma Harrysson

Colour ways: Black
Red

Description: Windbreaker with detachable sleeves and prominent 90s influences

Conceal logotype label
Placement: Front, right chest
Measurements: 2 cm high, 6,5 cm wide

Logotype label
Placement: Center back
Measurements: 2 cm high, 7,5 cm wide

Hex & ball
Placement: Inside neck
Measurements: 7 cm high, 7,5 cm wide

90's Function Jacket - Cross Season 13/16
Materials Date: 2020-02-14

Quality: Windbreaker
Size range: M
Art. no: 132807641
Supplier: Johnson & Co
Sample request: Photo
Designer: Wilma Harrysson

Colour ways: Black
Red

Description: Windbreaker with detachable sleeves and prominent 90s influences

Category	Art.no/supplier	Comments	Qty	Black	Red
Fabric					
100% polyester	233599671	As send sample	-	Black	Red
100% polyester	436208436	As send sample	-	Grey	White
100% polyester	86524124	Mesh lining	-	Black	Grey
90% polyester - 7% elastan	621246337	Cuff	-	Black	Red
Zipper					
40x6,6 cm	856342185	Center front	1	Black	Black
18x6,5 cm	342976358	Pockets	2	Black	Black
40x6,4 cm	433226543	Detachable sleeves	2	Navy	Navy
Drawstring					
000612025		Hem	1	Black	Black
412343865		Plastic cleop	2	Black	Black
Details					
Reflective string	007654221	Front and back	4	White	Silver
Accent color band	345672413	Upper half garment	4	Blue	Yellow

90's Function Jacket - Cross Season 14/16
Measurements front Date: 2020-02-14

Quality: Windbreaker
Size range: M
Art. no: 132807641
Supplier: Johnson & Co
Sample request: Photo
Designer: Wilma Harrysson

Colour ways: Black
Red

Description: Windbreaker with detachable sleeves and prominent 90s influences

Code	Point of measure	Size M (cm)
A	Chest over bust	98
B	Shoulder	46
C	Cuff height	6
D	Chest piece height	39
E	Shoulder	19,5
F	Sleeve length	37
G	1/2 length sleeve width	21
H	Waist length hem length	43
I	Waist between pocket zipper & chest piece hem	5
J	1/2 length	49
K	Waist between front zipper & waistband	6
L	Chest piece hem length	4
M	1/2 chest	49
N	Waist between front zipper & pocket zipper	19